

2019 Annual Report

We provide comprehensive care including medical interventions, specialized daily care, therapy, and education all within a loving environment that fosters positive emotional growth for at-risk children from orphanages and impoverished families in China.

159 abandoned children
received comprehensive care in
2019

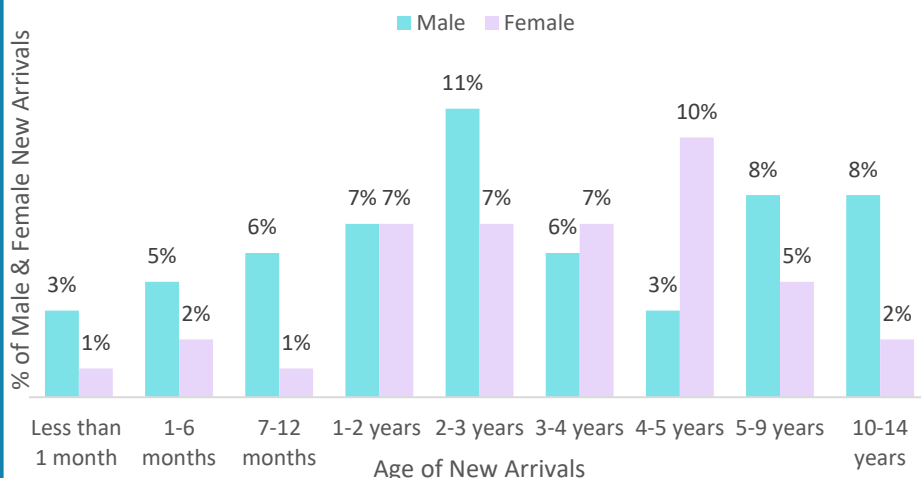


88 new
arrivals in
2019



108
children
remained in
our care at the
end of 2019

Age & Sex of New Arrivals

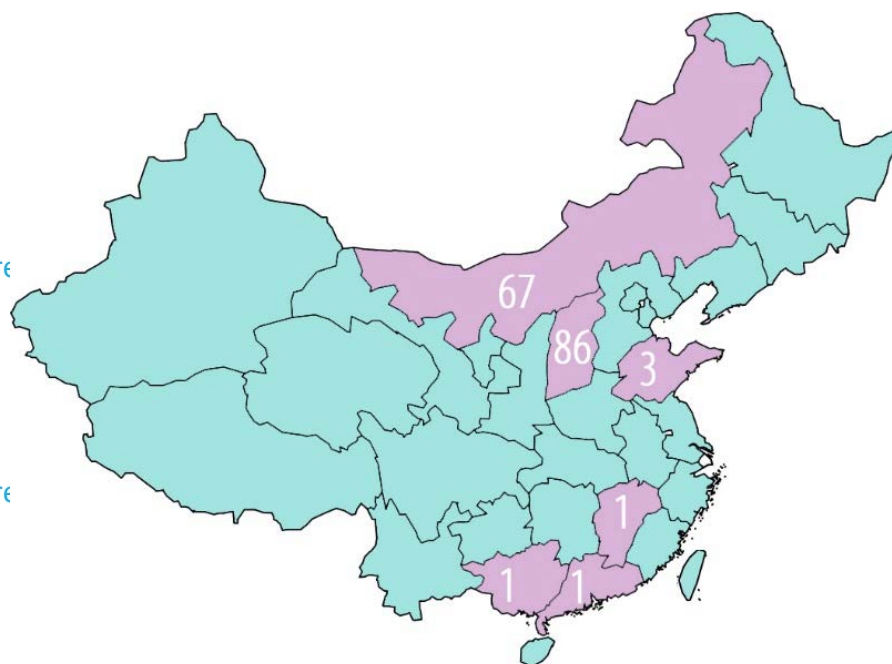


In 2019, 57% of
new arrivals were
male and 43%
were female.

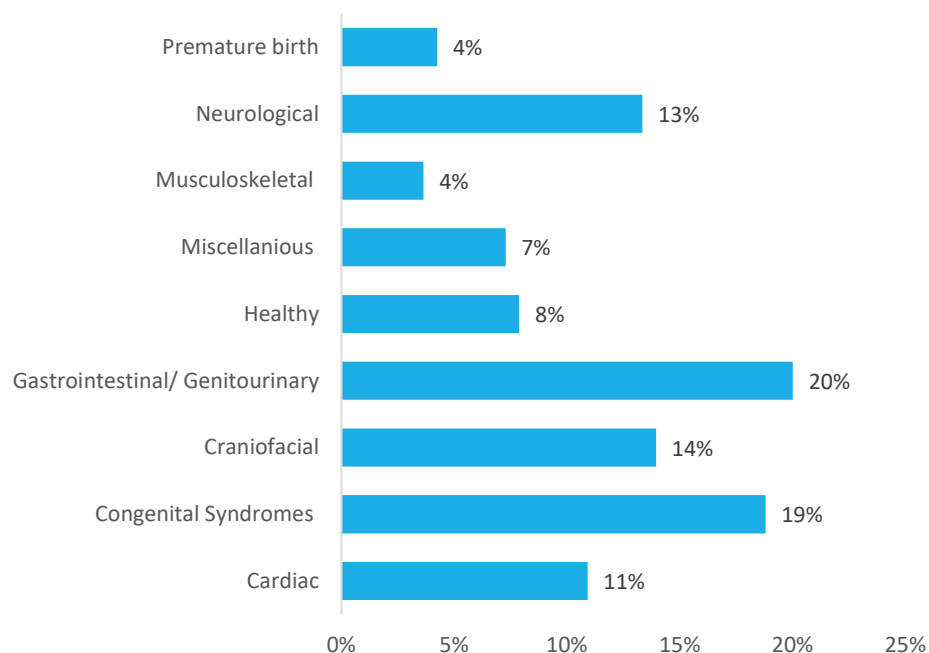
4 children were
just one day old
when transferred
into our care. The
oldest was 14 ½
years old.

➤ We partnered with **10** different Chinese Welfare Institutes in 2019.

➤ We have had long-term care homes inside of 3 different Chinese Welfare Institutes. Going into 2020, we have 2 homes in Northern China.



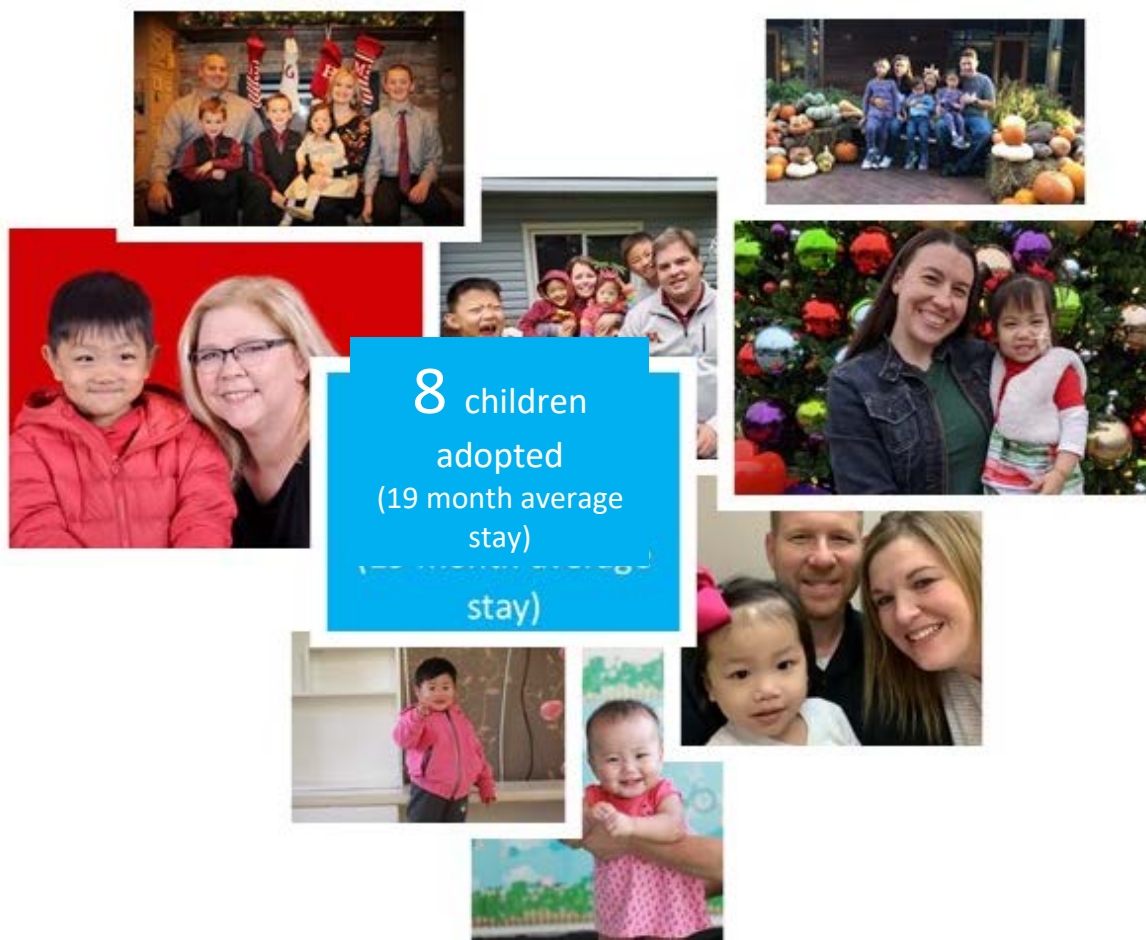
Medical Diagnosis



Similar to last year, the most common medical condition was Gastrointestinal/ Genitourinary related.

Forever Families

A total of **51** children transferred out of our care. From those who transferred out, the average length of time receiving care with us was fourteen months (438 days).



2 children transferred to other programs

41 children transferred back to home orphanage

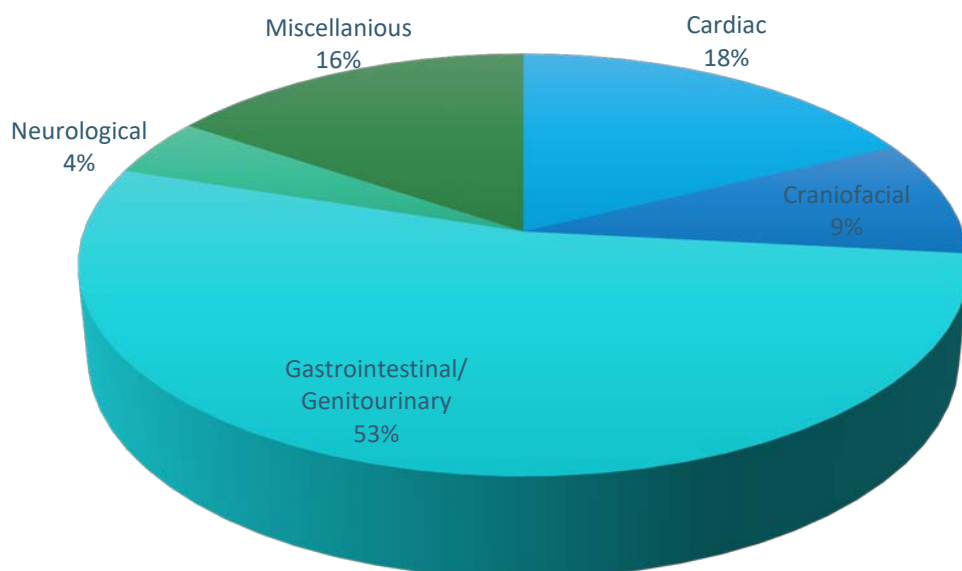


Medical Interventions in 2019

59 life-saving surgeries
and in-patient
treatment

315 out-patient visits

Type of Surgery



Examples of various surgeries we arranged in 2019 include surgeries to repair imperforate anus, esophageal atresia, congenital heart defect, cleft lip, cleft palate, spina bifida, hydrocephalus, and congenital hernia.

Financial Summary

